

Welcome & Introductions



- Thank you for joining us today.
- In the chat box, please enter your name and the name of any business or organization that you represent.
- Please hold all questions until our Q&A and discussion period.

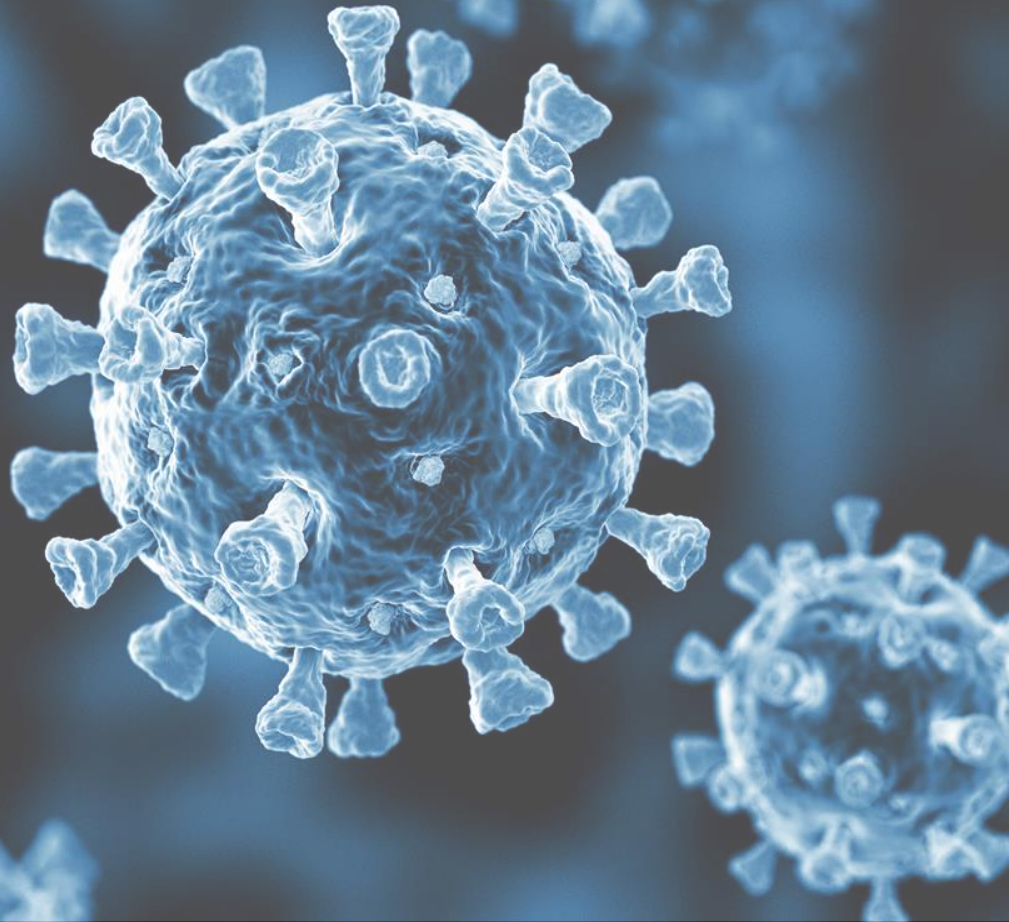
Today's Agenda

Update from Ohio Department of Health leaders on Ohio's vaccine distribution plans and progress.

Review of featured resources.

Group discussion.

COVID-19 Vaccination Update



COVID-19 Vaccination: Adding Phase 1B

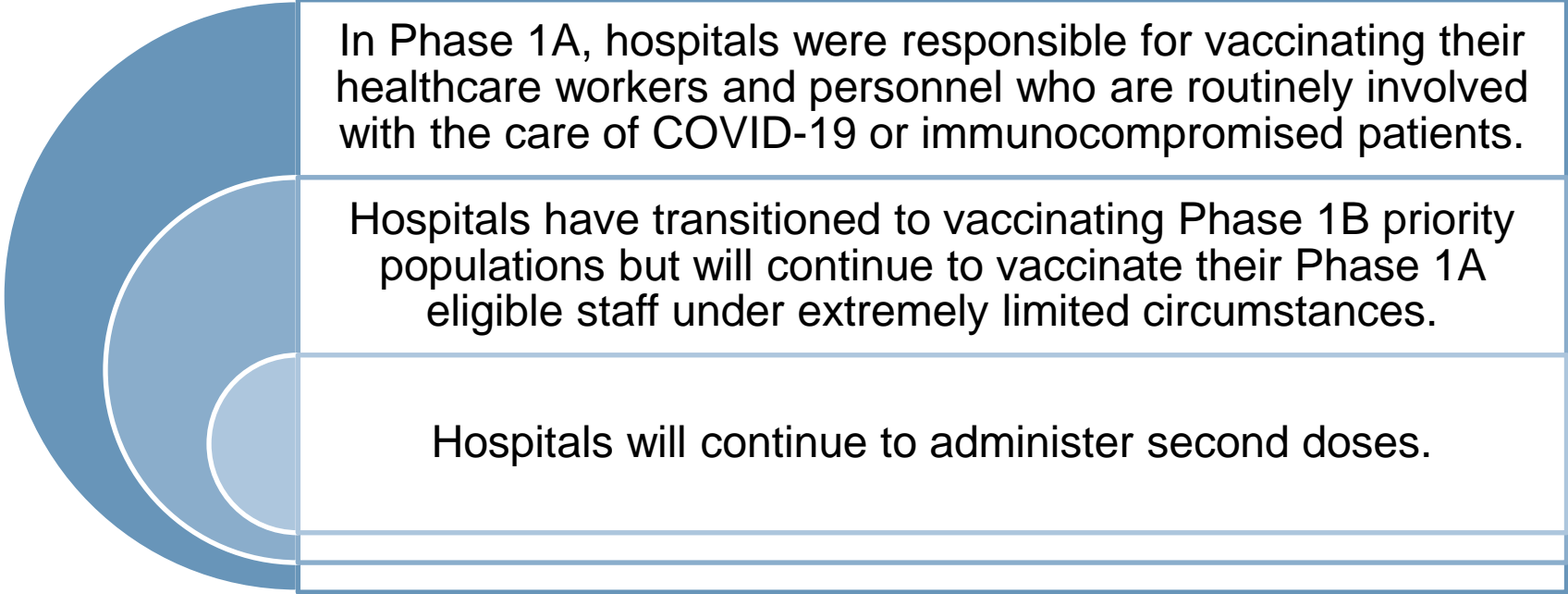
- ➔ Long-term care facilities update.
- ➔ Shift in focus for hospitals.
- ➔ Role of local health departments.
- ➔ Closer look at Phase 1B vaccine plan.

Long-term care facilities milestone

As of Jan. 19, residents and staff in all 900+ nursing homes in Ohio had been offered the first dose of COVID-19 vaccine by CVS, Walgreens, Absolute Pharmacy or PharmScript.

These pharmacies have begun the process of vaccinating residents and staff in Ohio's assisted living facilities.

Role of hospitals in Phase 1B



In Phase 1A, hospitals were responsible for vaccinating their healthcare workers and personnel who are routinely involved with the care of COVID-19 or immunocompromised patients.

Hospitals have transitioned to vaccinating Phase 1B priority populations but will continue to vaccinate their Phase 1A eligible staff under extremely limited circumstances.

Hospitals will continue to administer second doses.

Local health departments to continue to vaccinate Phase 1A population

During Phase 1A, local health departments (LHDs) were responsible for vaccinating healthcare providers and personnel not employed by a hospital/health system with the greatest occupational risk for exposure to and/or transmission of COVID-19, as well as residents/staff in select congregate care settings.



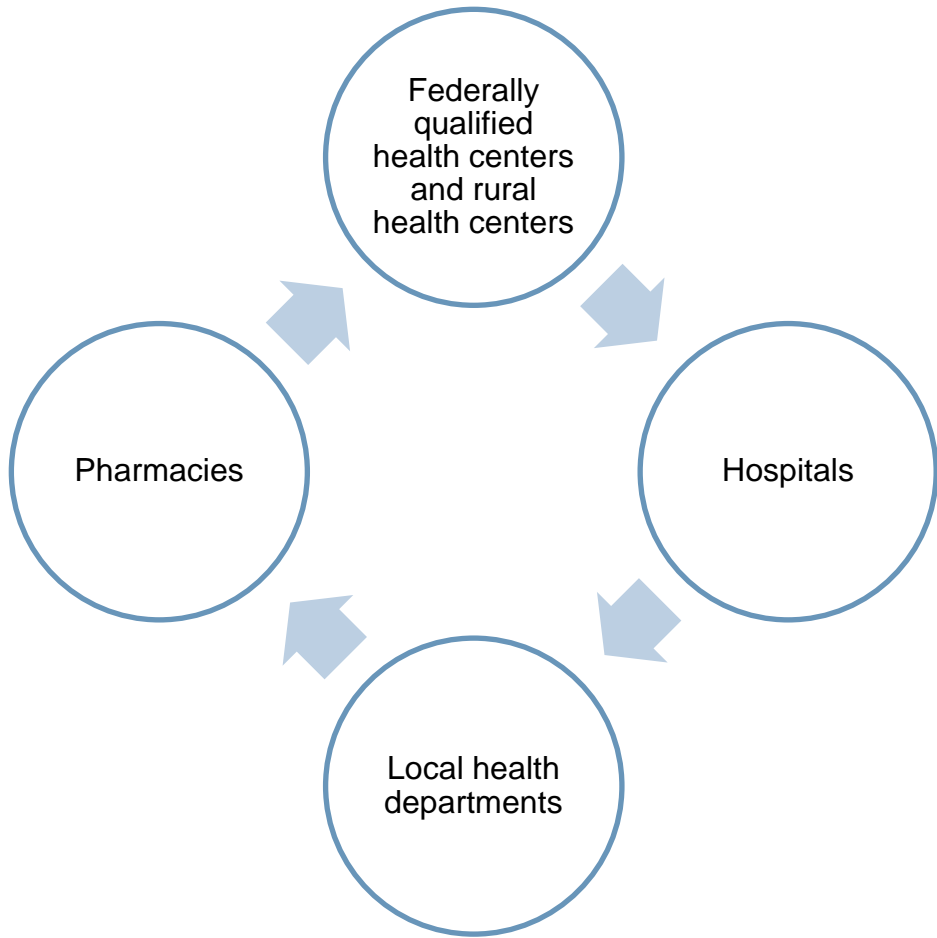
Local health departments should continue to vaccinate eligible and willing Phase 1A priority populations with first and second doses as Phase 1B begins.



LHDs that continue to vaccinate Phase 1A priority populations will continue to receive vaccine that should be used for those populations.

Anticipated Phase 1B vaccination providers

- Not all Phase 1B providers will be allocated vaccine initially.
- Allocations will be made on a rolling basis as vaccine doses become available.
- Initially, allocation modeling will be population-based to determine how much vaccine each county will receive.
- Vaccine allocation will eventually be determined based on capacity across vaccination provider channels.
- Primary care and home health providers will be added as more vaccine becomes available.



Phase 1B priority populations

Ages 65 and older

- Starting with older Ohioans age 80+ (beginning this week)
 - Includes an estimated 420,000 Ohioans (excluding long-term care facility residents who are being vaccinated separately as part of the federal Pharmacy Partnership for Long-Term Care Program).
- Each week thereafter, another group of older Ohioans will be eligible for vaccination. Timeline subject to change based on supply:
 - Age 75+ (week of Jan. 25).
 - Age 70+ (week of Feb. 1).
 - Age 65+ (week of Feb. 8).

Individuals with severe congenital, developmental, or early onset medical disorders

- Vaccinations for these individuals will begin the week of Jan. 25 and will be approached in two parts.
 - Jan. 25 – those with intellectual or developmental disability AND a specific qualifying medical condition, listed on next slide.
 - Feb. 15 – those with specific qualifying medical conditions.
- County developmental disabilities boards will coordinate all vaccination efforts for individuals with developmental or intellectual disabilities during the first phase.

K–12 school teachers and staff

- K-12 school employees become eligible for vaccination starting the week of Feb. 1.
- This includes teachers, support staff, administrators, food service staff, bus drivers, paid coaches, janitorial staff, and other adults who work in school buildings.
- These vaccinations of staff are part of a plan to get Ohio K-12 students back in the classroom full-time or through a hybrid model by March 1.

Ohio's Vaccination Program

Phase 1B

Ohioans with severe congenital, developmental, or early-onset medical disorders

Vaccinations for this group of Ohioans will take place in two phases. During the first phase, eligibility will begin with individuals who have a developmental or intellectual disability AND one of the conditions listed below.

During the second phase, eligibility will expand to any individuals with one of the conditions below.

- Cerebral palsy
- Spina bifida
- Severe congenital heart disease requiring hospitalization within the past year
- Severe type 1 diabetes requiring hospitalization within the past year
- Inherited metabolic disorders, including phenylketonuria
- Severe neurological disorders, including epilepsy, hydrocephaly, and microcephaly
- Severe genetic disorders, including Down syndrome, fragile X syndrome, Prader-Willi syndrome, Turner syndrome and muscular dystrophy
- Severe lung disease, including asthma requiring hospitalization within the past year and cystic fibrosis
- Sickle cell anemia
- Alpha and beta thalassemia
- Solid organ transplants



MIKE DEWINE
GOVERNOR OF OHIO



Department
of Health

coronavirus.ohio.gov

COVID-19

Jan. 22, 2021

10

Ohio | Department
of Health

Vaccination plan for people with disabilities, disorders

First Group

Beginning week of Jan. 25

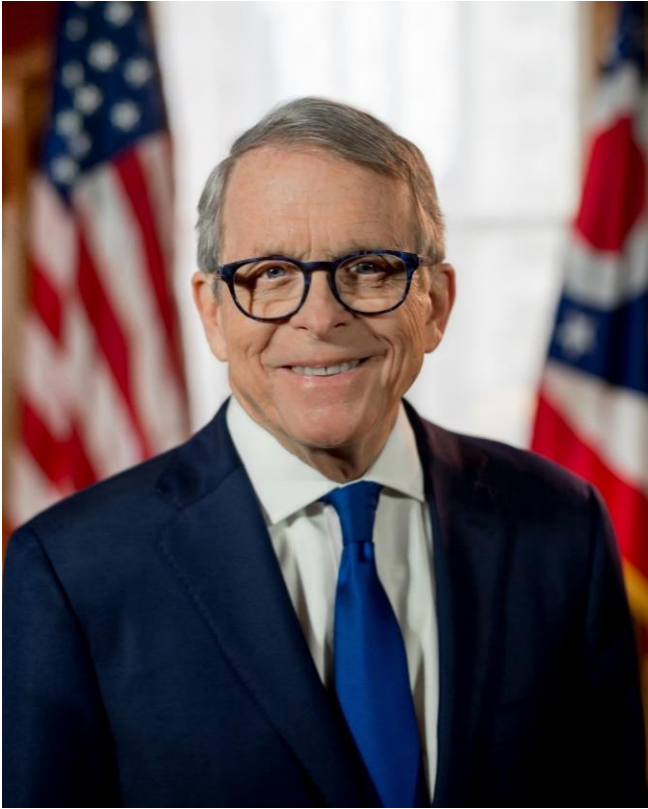
- Vaccines will first be given to individuals who have both an intellectual or developmental disability AND a qualifying medical condition.
- Local boards of developmental disabilities will contact individuals who meet eligibility requirements to coordinate vaccinations.
- These boards will work with children's hospitals and some local health departments on scheduling vaccinations.
- Only those individuals identified and scheduled by the local developmental disabilities board will be eligible for vaccination at this time.



Second Group

Beginning week of Feb. 15

- People who have any of the qualifying conditions and do not have an intellectual or developmental disability will become eligible for the COVID-19 vaccine.
- Additional information about how these individuals can choose to receive their vaccines will be forthcoming.



“This group has been identified by medical professionals as having a high risk of death if they caught COVID-19. It’s critical that we continue to prioritize Ohioans who are most vulnerable.”

- Governor Mike DeWine

Vaccination plan for K-12 school staff

To be eligible for vaccination in Phase 1B, schools must plan to return to full or hybrid in-class learning by March 1, and this decision had to be made by Jan. 18.

The vast majority (96%) of public K-12 schools intend to continue or return to full or hybrid in-class learning by March 1.

School districts are choosing a retail pharmacy partner, secured by the state, or using an existing local partnership, to administer the vaccinations to school personnel.

Beginning the week of Feb. 1, vaccination administration will be coordinated with school-provider partnerships, and a majority will be closed clinics for school personnel only.

Vaccine providers and vaccine shipment update

- ➔ COVID-19 Vaccination Provider Locations search tool.
- ➔ Phase 1B providers.

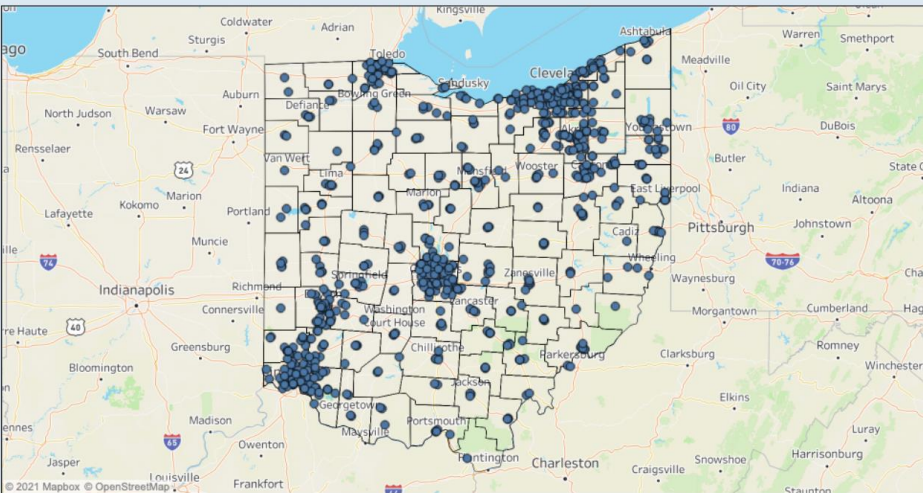
New statewide vaccine provider search

- The state launched an online search tool on Jan. 15 that shows providers throughout Ohio who have received shipments of COVID-19 vaccines for those currently being vaccinated in Phase 1B.
- As more vaccine providers receive shipments, they will be added to this page.
- Searchable by county or ZIP code.

 vaccine.coronavirus.ohio.gov

State of Ohio | COVID-19 Vaccine Administration Locations Last Updated: 1/20/2021

Name: (All) County: (All) Zipcode: (All) Total Administration Locations: 753



Name	Address	County	Phone	Web Site
ACMC Health and Wellness Plaza	2211 Lake Avenue Ashtabula, OH 44004	Ashtabula	(440) 994-2675	http://www.acmchealth.org/
Acme Pharmacy	3235 Manchester Rd. Akron, OH 44319	Summit	(330) 644-0350	http://www.acmestores.com
Acme Pharmacy	3979 Medina Rd. Akron, OH 44333	Summit	(330) 666-3300	http://www.acmestores.com
Adams County Health Department	923 Sunrise Avenue	Adams	(937) 544-5547	http://www.adamscountyhealth.org

Statewide scheduling system under development

The Ohio Department of Health is in the process of developing a state vaccination scheduling system tool for vaccination providers. Additional information will be forthcoming.

“Providers throughout the state are developing systems that work best for them in terms of scheduling and administering vaccinations. As we continue to roll out additional vaccination groups, we will work with our local partners, and modify the process as needed.”

– Governor Mike DeWine

Q&A: Your questions about Ohio's vaccine plan

Questions	Resources	Contact us
<p>Please click unmute, then introduce yourself before asking your question.</p> <p>You can also drop your questions in the chat.</p>	<p>Visit our COVID-19 information hub for vaccine information and resources for providers and consumers.</p> <p>coronavirus.ohio.gov/vaccine</p>	<p>Do you have COVID-19 questions?</p> <ul style="list-style-type: none">• Contact our Call Center at 1-833-4-ASK-ODH (1-833-427-5634).• Contact our Provider Call Center at 1-844-ODHVAX (1-844-963-4829).

FEATURED RESOURCES

- ➔ COMING SOON: New COVID-19 communications hub.
- ➔ Social determinants of health information.

Information about equity and for high-risk groups

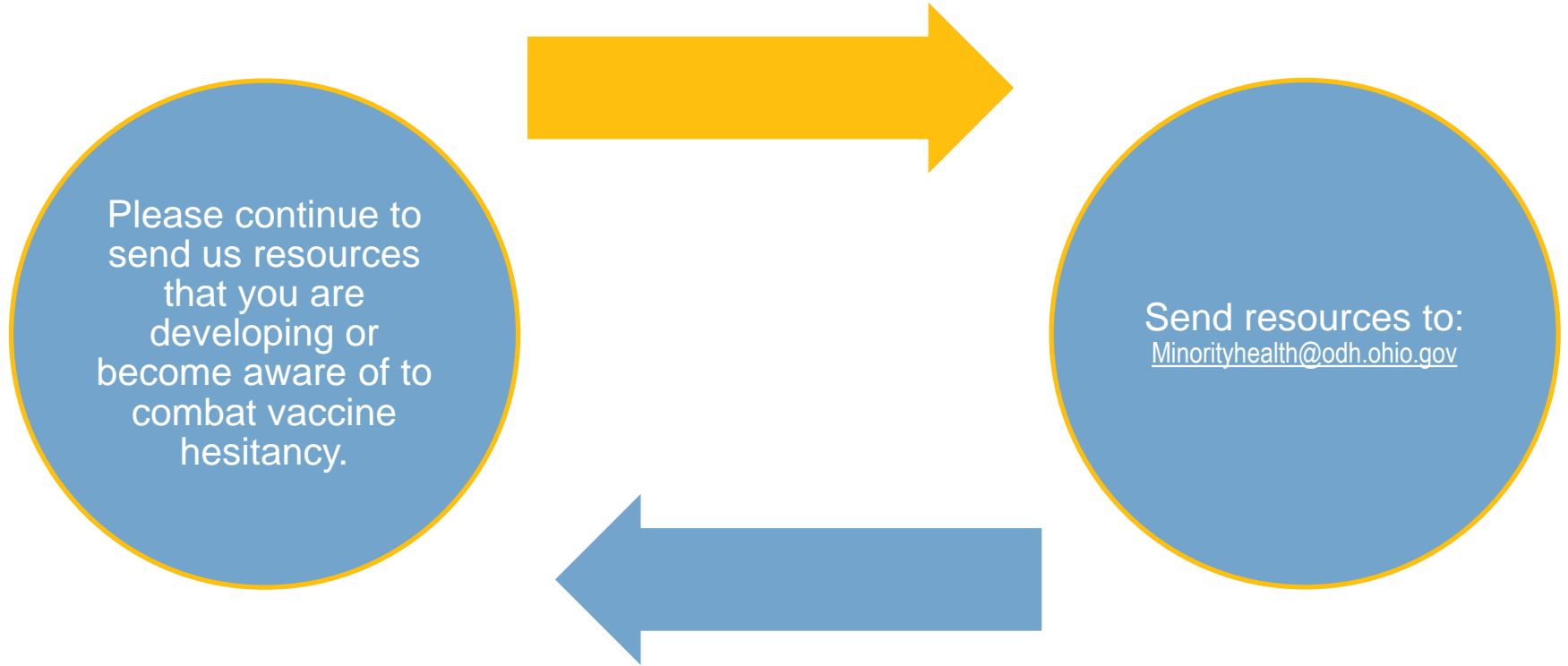
COMING SOON:
New COVID-19
Communications
Hub

- Educational and promotional materials and resources.
- Guidance on civil rights protections related to COVID-19.
- Updates on health equity efforts related to COVID-19.



coronavirus.ohio.gov

How you can contribute to this effort



Resources you can use



Department
of Health



Ohio Commission On
Minority Health

THE OHIO STATE UNIVERSITY
KIRWAN INSTITUTE FOR THE STUDY
OF RACE AND ETHNICITY

THE OHIO STATE
UNIVERSITY
COLLEGE OF PUBLIC HEALTH

The picture can't be
displayed.

HealthPrism™

Social Determinant of Health Information for Select Counties Across Ohio

December 15, 2020



- Ohio Department of Health Social Determinant of Health Information for Select Counties Across Ohio
- Kierra S. Barnett, PhD, MPH, Kirwan Institute, Ohio State University

Key Elements of the Analysis

This document provides information regarding the population in your county that may be at higher risk of complications from COVID-19 to facilitate testing prioritization and future vaccination distribution with your external partners. **Click on the section name to jump to each section in this document.**

1

Introduction & Summary

- Define vulnerability based on likelihood of complications associated with COVID-19 from a healthcare and economic lens
- Overview of zip codes where a higher concentration of COVID-19 vulnerable Individuals reside
- Overview of access to testing and medical centers, and urgent care facilities to prioritize testing strategies
- View vulnerable population maps and aggregated data at the Census Tract level area. A summary of zip code level information is also available in this report.

2

Deep-Dive into Ross County

- Identify top 10 Census Tracts in the county (and their corresponding zip codes) that have the highest risk of complications from COVID-19 and other key insights
- In-depth analysis of the top 5 Census Tracts that may be prioritized for COVID-19 response and communications including potential temporary testing/PPE distribution sites

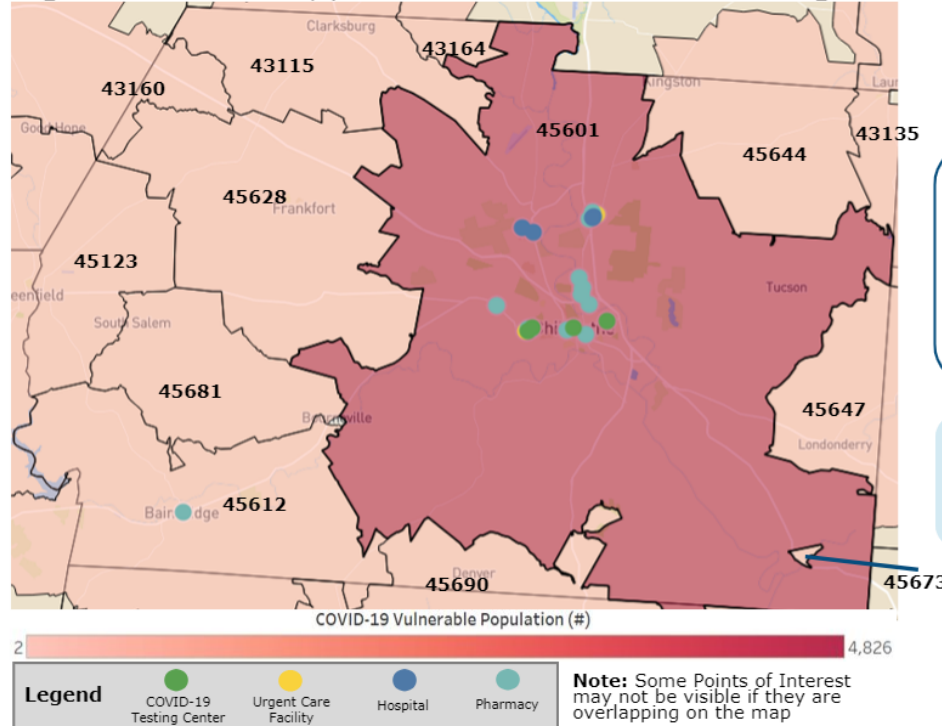
3

Needs Assessment Recommendations

- Key recommendations for COVID-19 response based on the demographics in your county

Overview of Vulnerability in Ross County (Zip Code Level)

According to publicly available data, Ross County's Health Professional Shortage Area score is 4.5*. Using HealthPrism™ data and the map below, we provide a more precise view of vulnerable population vs. hospitals, urgent care facilities, pharmacies and COVID-19 testing centers.



73%
Of vulnerable population in Ross county resides in zip code 45601

4	2	4	14
Testing Centers	Urgent Care Facilities	Hospitals	Pharmacies

Serve 6,552 residents vulnerable to COVID-19 complications in Ross County and are concentrated around the center of zip code 45601

Concentration of healthcare and testing facilities limits access for vulnerable populations in surrounding areas and neighboring zip codes which may increase risk of exposure and transmission during transit to above facilities.

To further analyze what makes zip code 45601 in Ross County vulnerable, we analyzed the top 10 Census Tracts within that zip code that may be prioritized for COVID-19 response

*HPSA Scores range from 0 - 26. A higher score means there is a greater need.

How to request data for your community



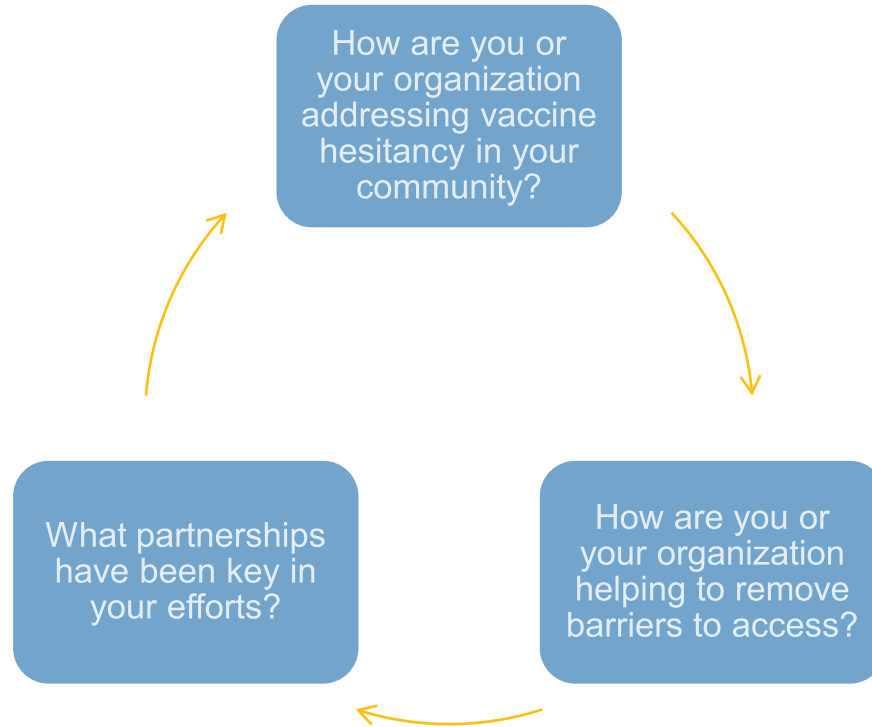
Please contact your local health department or email

Minorityhealth@odh.ohio.gov.

Please include:

- Your name.
- The name of your organization.
- The county for which you are requesting data.
- A return email address.

Group discussion



Send us your ideas

Next meeting:
Jan. 29, 1 p.m.



Submit suggestions for the
resource hub:

- Include your contact information.
- Include source of the resource you are suggesting.
- Include target audience of the resource.



Submit your questions and
ideas to:
Minorityhealth@odh.ohio.gov